


PANASONIC ELECTRONIC DEVICES MALAYSIA SDN BHD

Panasonic Group Site Report 2009
 FY2009 :April 1, 2008 - March 31, 2009

Address	No 1, Jalan Jemuju 16/13, 40200 Shah Alam			
Lot area	111506m ²	Total floor area	89698m ²	
Establishment day	1972/12	Employees	2013persons	
ISO14001 certification date	1998/10	ISO14001 renewed	2009/10	
Major Products	Electrolytic Capacitor, Switces, Variable resistor, Fixed Resistor			
Environmental Information disclosure	CommunicationFY2009 4items	visitors on factory tour	5persons	
Contact	Quality Innovation Department		TEL: +603-58912830	

Message from Compliance Administrator

PEDMA, as a multi-national company specialized in electronic components manufacturing, shall fully recognize our responsibility towards environmental protection and shall devote special care to sustain the co-existence of our business management and the environment.

As the world heartily concern about global warming issue PEDMA is aggressively carried out CO2 reduction as part of our Environmental Management Program. We, the management of PEDMA, are fully committed with this CO2 reduction activities as part of our contribution to society.



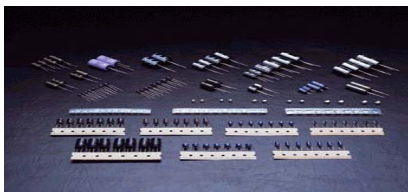
Compliance Administrators

Mr. Baharum Othman

Main activities in FY2009

Target	Result
- Reduce energy consumption by 3.5 %	Reduced by 20%
- Reduce water consumption by 2.5 %	Reduced by 7%
- No legal non-compliances cases	Zero cases was reported.

Products of Environmentally-conscious information



ELECTROLYTIC CAPACITOR, CHIP RESISTOR

Electrolytic Capacitor and Chip Resistor is widely used in any electric appliance from home appliances, Audio Video to automotive industries. We always aiming for the best to meet customer satisfaction. Our main customer including Panasonic Group, JVC, SIEMENS Group, BOSCH, DELL, TRW and etc.

CAPACITOR A TYPE, TS (SNAP-IN), V-CHIP



ELECTRO MECHANICAL COMPONENT (EMC): VARIABLE RESISTOR, SWITCHES

EMC is widely used in any electric appliance from home appliances, Audio Video to automotive industries. Certified with TS16949:2002 we are aiming for the best to meet our customer expectation. Our main customer including Panasonic Group, JVC, IBM, DELL, TRW and etc.

VARIABLE RESISTOR, SWITCHES



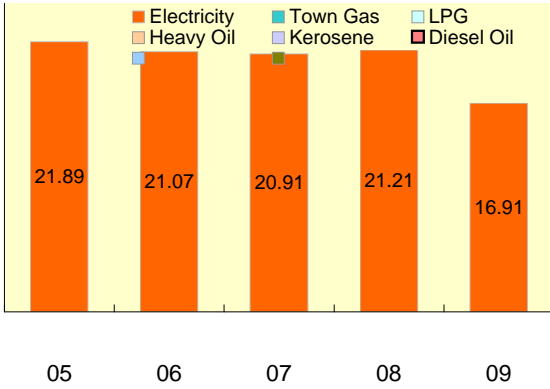
-> link to a product information web-site : <https://pedma.panasonic.com.my>

Environmental performance data

Year displayed in graph ex) 2009: April 1, 2008 - March 31, 2009

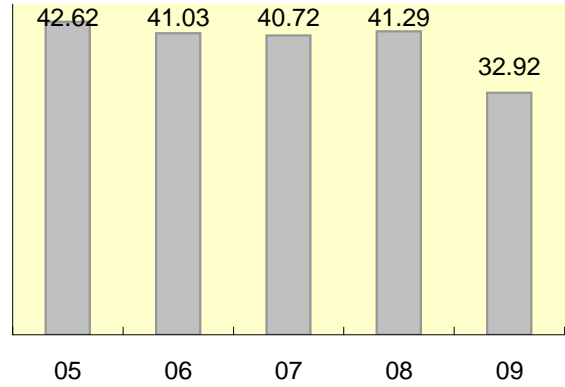
Energy

Unit: 1000kl



CO2 Emission

Unit: 1000t-CO2



Natural Energy

FY2009

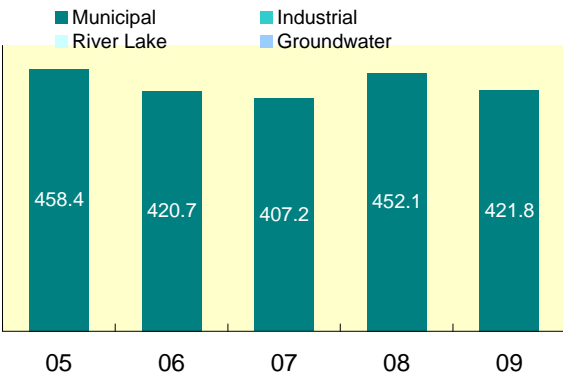
0.00 1000kWh

Calculation standards

Base on PED calculation standard.

Water

Unit: 1000m³



Circulated water

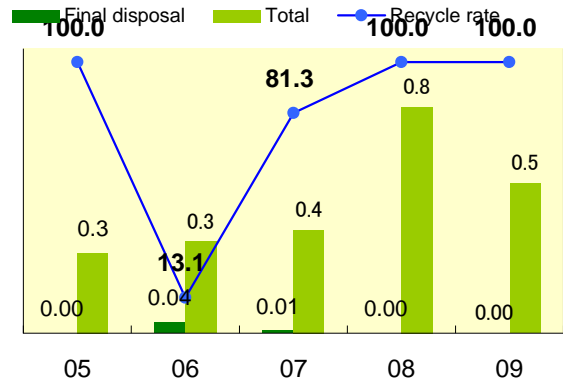
Rain-water

FY2009

0.00 m³ 0.00 m³

Waste

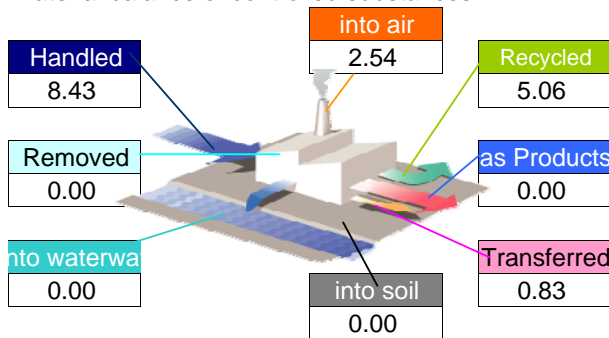
Unit: 1000t, %



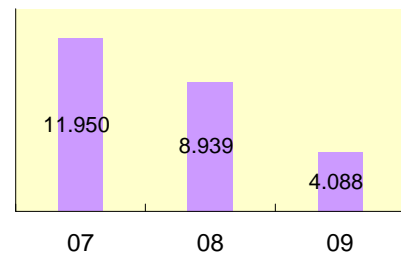
Chemical substances

09

Material balance of controlled substances FY2009



Key target reduction substances



About The Panasonic Group's Chemical Substances Management in Factories

http://panasonic.net/eco/factory/chemical_substance/

About the above data

Strengthen storage inventory and usage inventory control

Compliance FY2009

<Air pollutant measurement results>

	Unit	Facility name	Legal limit	Voluntary limit	Average measured	Maximum measured	Measuring frequency
SOx	Nm ³ /h	Gen Set PH01	200.00	200.00	0.00	0.00	Once a year
		QCD02	200.00	200.00	0.01	0.01	3 Month a year
		QCD08	200.00	200.00	0.01	0.01	3 Month a year
NOx	ppm	Gen Set PH01	2000.00	2000.00	0.13	0.13	Once a year
		QCD02	2000.00	2000.00	0.01	0.01	3 Month a year
		QCD08	2000.00	2000.00	0.05	0.05	3 Month a year
Particulate	g/Nm ³	Gen Set PH01	400.00	400.00	0.07	0.07	Once a year
		QCD02	400.00	400.00	0.01	0.01	3 Month a year
		QCD08	400.00	400.00	0.04	0.04	3 Month a year

<Water pollutant measurement results>

	Unit	Facility name	Legal limit	Voluntary limit	Average measured	Maximum measured	Measuring frequency
COD	mg/l	WWTP FR	100.00	100.00	8.00	27.00	Once a Year
		WWTP EC	100.00	100.00	10.00	29.00	Once a Year
		Point 4	100.00	100.00	75.00	75.00	Once a Year
BOD	mg/l	WWTP FR	50.00	50.00	5.00	17.00	Once a Year
		WWTP EC	50.00	50.00	3.00	14.00	Once a Year
		Point 4	50.00	50.00	39.00	39.00	Once a Year
Nitrogen	mg/l						
Phosphorus	mg/l						

<Noise and vibration>

	Unit	Measurement Area	Legal limit	Voluntary limit	Average measured	Maximum measured	Measuring frequency
Noise	dB	DT Factory Perimeter	65.00	65.00	52.00	58.00	once a year
		NT Factory Perimeter	55.00	55.00	50.00	54.00	once a year
Vibration	dB	DT N/A			0.00		
		NT N/A			0.00		

*Legal limit: The strictest value out of those specified by laws, ordinances or agreements.

*N/A(not applicable):The meaning when the facility is exempted from the regulation.

About excess of legal limit value

Not Applicable

Improvement of direction by government, or point outs by neighbor

Occurrence situation	Countermeasure
No case of excess legal limit	Not Applicable

Environmental Policy

PEDMA, as a multi-national company specialized in electronic components manufacturing, shall fully recognize our responsibility towards environmental protection and shall devote special care to sustain the co-existence of our business management and the environment.

We are committed to:-

- (1) Comply strictly to applicable laws and regulations of the country, international agreements and requirements related with environmental issues.
- (2) CO2 reduction, prevent pollution, reduce waste, conserve resources and promote recycling activities.
- (3) Set reasonable objectives and targets to manage our significant environmental impacts and review them annually for continual environmental performance.
- (4) Promote environmental awareness activities to related staff including person that working on behalf of PEDMA and enhance their environmental consciousness through training and education.

This policy shall be made available to the public and business clients where appropriate.

We, the management of PEDMA, are fully committed to this policy as part of our contribution to society

Aiming to reduction of environmental impact



ENERGY CONSERVATION ACTIVITY

- Energy Reduction Campaign
- Standardize room temperature from at 26°C
- Light sensor implementation for toilet light & walking space
- Replace centralize aircond with split unit for easier switching at meeting room, discussion room and etc
- Servicing cooling tower at standard interval
- Replace CRT monitor with LCD monitor
- Installation of Metergauge for individual equipment monitoring



WATER CONSERVATION ACTIVITY

- Optimize and control water usage at FR Plating plan (FR plating plant is highest water consumption in PEDMA)
- Monitoring water leaking and upgrade piping system to prevent unnecessary losses.
- Proper water usage among the staff usage control
- Promoting water conservation activities thru awareness, training, briefing and environment campaign.

Environmental Communication



Department of Occupational Safety and Health (DOSH) Malaysia carried periodically inspection at PEDMA

SIRIM ISO14001 Audit

- (a) To determine whether the organization is continuously complying and maintaining the system according to ISO 14001 Standard.
- (b) To assess whether there are any changes to the organization's EMS
- (c) To verify corrective actions from previous audit were completed satisfactorily.



Under Poison Act 1952 all chemical listed in First Schedule (Poison List) is required to be licensed by State Health Department. An inspection is being carried out by enforcer to ensure PEDMA practice is in control.



Emergency preparedness and response

**PEDMA
 FIRE EVACUATION DRILL REPORT
 20th August 2009**

Alarm Activated	= 2:58hrs
Alarm Stop	= 3:02hrs
Clear Signal Given	= 3:11hrs
Duration for Clear Signal	= 13 mins
Guard Contact BOMBA (Including the CMS System)	= 3:03hrs
BOMBA Truck Arrived	= 3:08hrs
Duration for BOMBA to Arrive	= 5 mins

